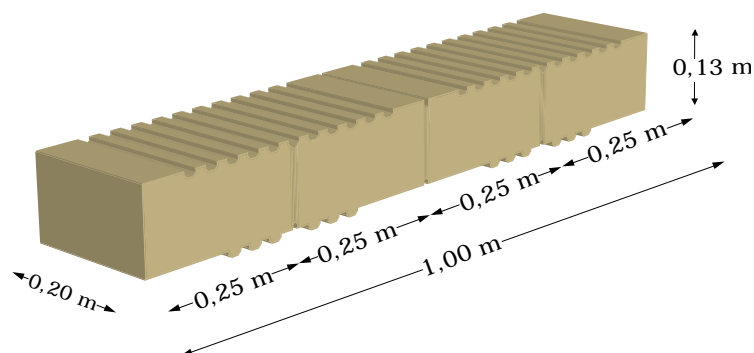




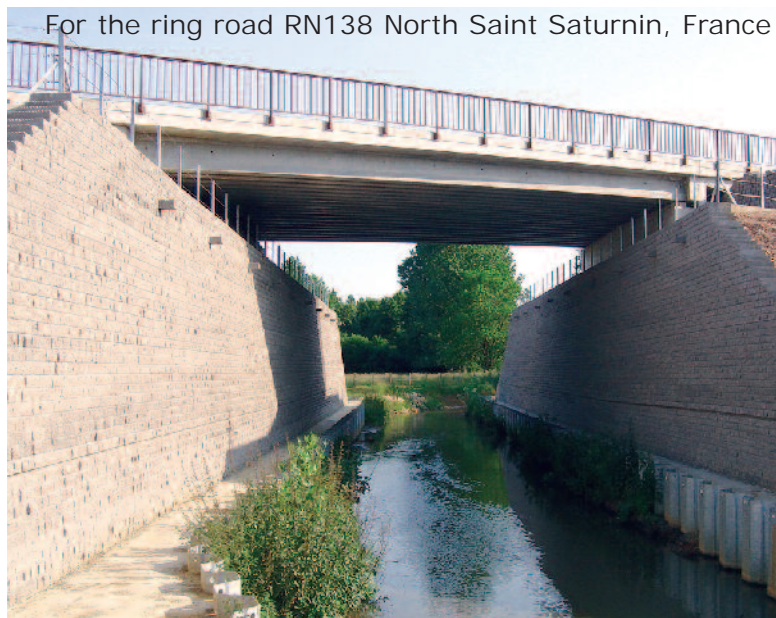
- Bridge abutments
- Retaining walls
- Separating walls
- Anti-noise screens
- Vertical fences
- Maritime docks
- Dykes and embankments



High tech elements, manufactured from specialised concrete, high resistance, handle able, split stone faced, through coloured.

*Awarded the LABEL IVOR DRAST  
by the Ministry of Equipment*

For the ring road RN138 North Saint Saturnin, France



Sold on request with specific study  
for each structure

## Technical features

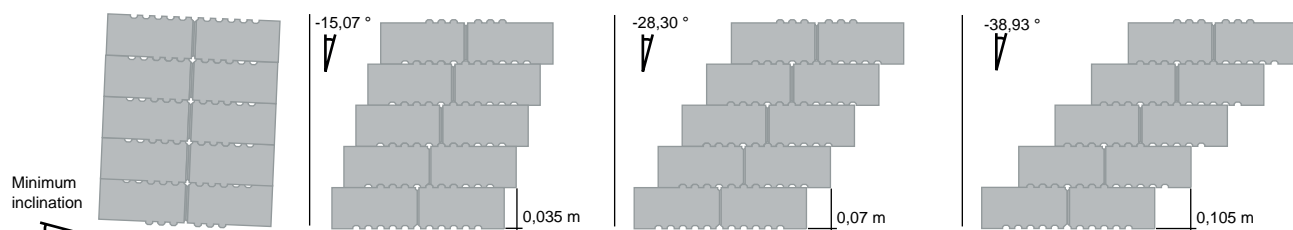
- Weight of elements
  - Module 1000: approximately 54 Kg
  - Module 500: approximately 27 Kg
  - Module 250: approximately 13 Kg
- Number per pallet
  - Module 1000 : 24
  - Module 500 : 48
  - Module 250 : 96
- Weight of the pallet: 1300 kg
- Colour: according to region
- Maximum height : 25 m

System patented, trademark and design registered.

Reproduction, even partial prohibited without permission.

Information is given in good faith but is subject to change without prior notice.

[www.betoconcept.com](http://www.betoconcept.com)



## Construction

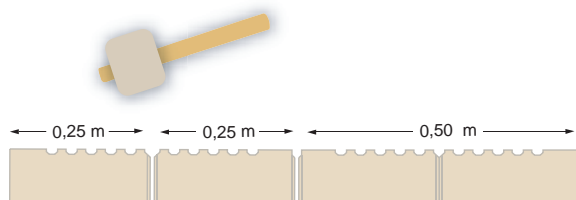
- Elements assembled completely dry except for the foundation base
- Fully interlocking due to the patented system of lug connectors, providing great resistance
- Possibility of several angles from the vertical
- Possibility curve without cut
- Possible to construct walls on sites inaccessible to machinery
- Wall with or without geotextile according to the parameters of the project
- Tools required: bolster chisel, hammer, string line, measuring tape, spirit level



The installation times vary depending on the size of the site and the height of the structure. In very good conditions, a team of 4, operatives, can assemble up to 35 m<sup>2</sup> per day of 8 hours.

The resulting structure is durable and resistant to significant impact. The structure can be laid to a flexible plan profile, with a completely dry-build construction. Heights beyond 20 metres can be achieved.

Blocks pre-scored for splitting on the pallet



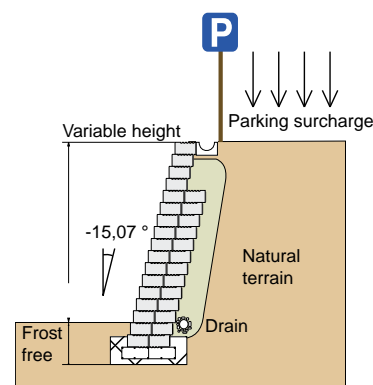
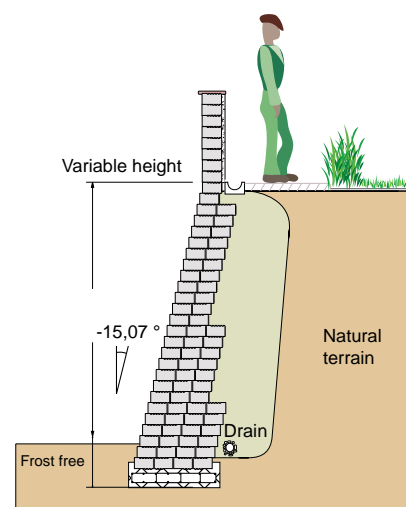
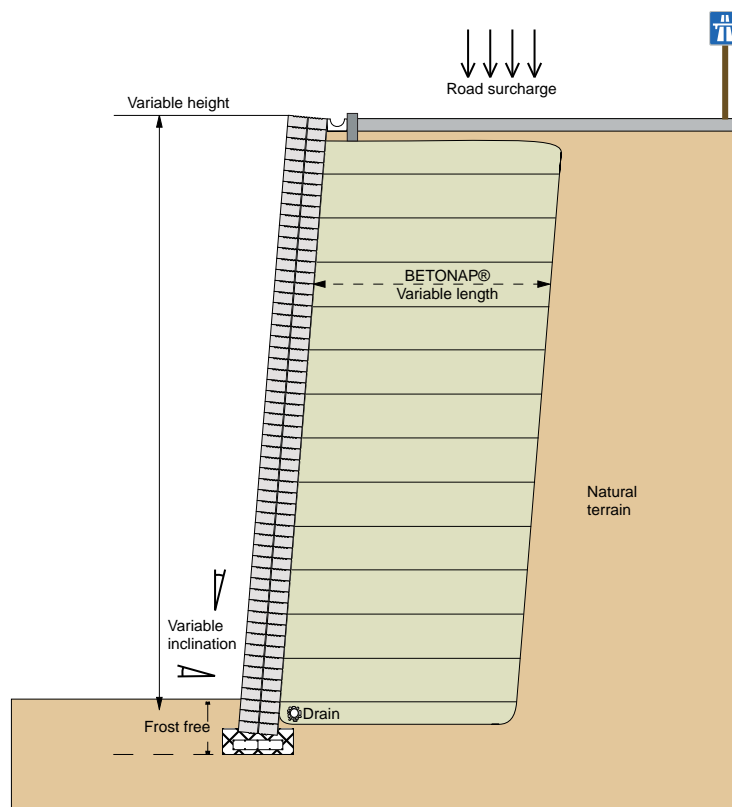
The entire element is easily cut by hand and can achieve 1 element 750 mm wide plus 1 of 250 mm or 4 of 250 mm or 2 of 500 mm. All split units can be used within the wall.



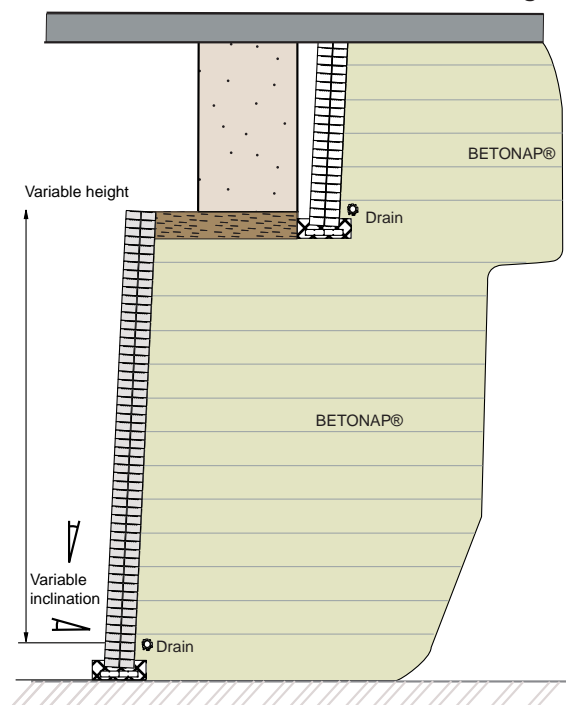
The land on which the structure will be assembled must be verified by an Approved Geotechnical Engineer to validate the design. Our responsibility is limited to products provided. The quality of foundation soil, slope faces, backfill and the installation are the responsibility of the Employer or Contractor and under no circumstances BETOCONCEPT®.



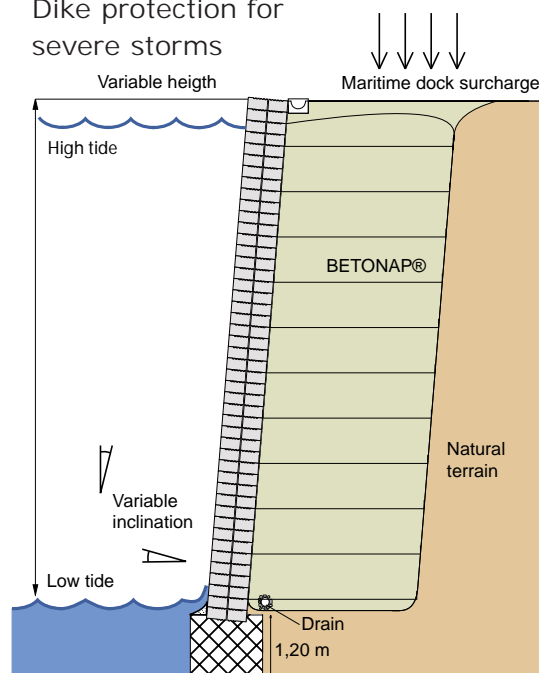
## Possibilities for structure



## Bridge abutment



## Dike protection for severe storms



All these assemblies are made with design study.

System patented, trademark and design registered.

Reproduction, even partial prohibited without permission.

Information is given in good faith but is subject to change without prior notice.

[www.betoconcept.com](http://www.betoconcept.com)

Northsea, Hartlepool, UK

## Achievements



Marseille (13), France

Crossroads Gardanne, France - DDE 13  
Departmental Direction of Equipment



Urban Highway South Nice 06, France



Port of Beyrouth, Lebanon

The land on which the structure will be assembled must be verified by an Approved Geotechnical Engineer to validate the design.  
Our responsibility is limited to products provided. The quality of foundation soil, slope faces, backfill and the installation are the responsibility of the Employer or Contractor and under no circumstances BETOCONCEPT®.

[www.betoconcept.com](http://www.betoconcept.com)